

ROAD INDEX

A	I	R	ROCK CREEK RD. A1
	J		JOANN DRIVE C-3
B	BURROWS RD. B1-F1	K	KILE ROAD A2-A6
		S	SUN ROAD D5
C	CLAY STREET B1-C6	L	LEGGETT RD. B1-F2
		T	
D	DEWEY ROAD	M	MADISON RD. D1-D6
		U	MORGAN RD. F1-F3
			MURPHY RD. F1
E			
		V	
F		N	
		W	WHITNEY RD. D5-F5
			WOODHILL DR. B1
		O	
G	G.A.R. HIGHWAY A4-F4		
		X	
		P	PLANK ROAD B1-F6
		Y	
H	HART ROAD A2-E2		
	HAUTALA ROAD C6		
		Q	
		Z	

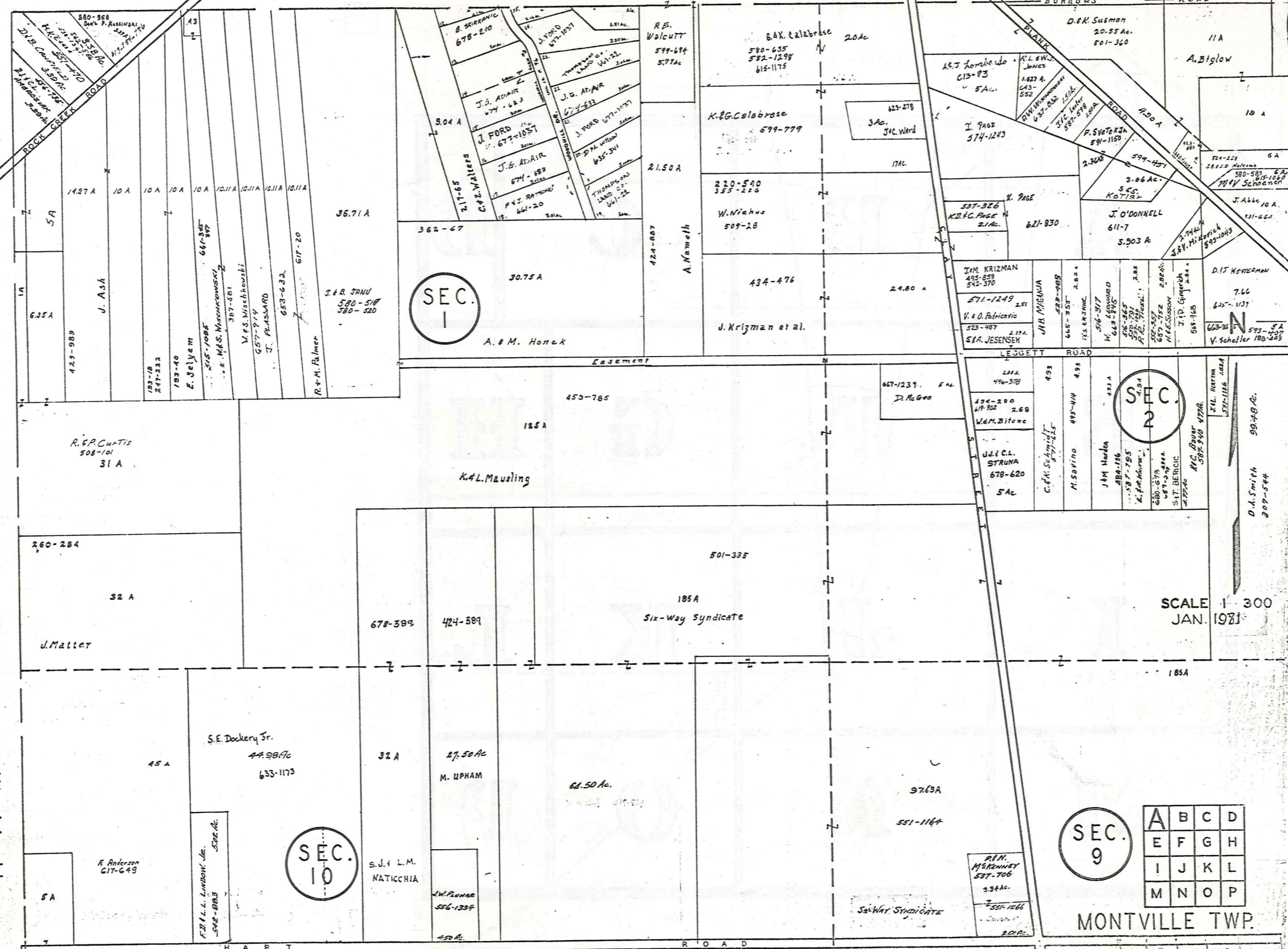
- ① MONTVILLE ELEM. SCHOOL
- ② COMMUNITY CHURCH
- ③ MONTVILLE METHODIST CHURCH
- ④ MONTVILLE CEMETERY
- ⑤ MONTVILLE VOL. FIRE DEPT.
- ⑥ UNITED STATES POST OFFICE
- ⑦ MONTVILLE TOWN HALL
- ⑧ STATE HIGHWAY GARAGE (SUB STATION)

MONTVILLE TOWNSHIP
 SCALE: 1" = 2000'
 ROBERTE. PHILLIPS,
 GEauga COUNTY ENGINEER

--- UNPAVED ROADS
 --- PAVED ROADS
 --- TOWNSHIP LINE
 --- COUNTY LINE

THOMPSON TOWNSHIP

HAMBDEN TOWNSHIP



SEC. 1

SEC. 2

SEC. 10

SEC. 9

A	B	C	D
E	F	G	H
I	J	K	L
M	N	O	P

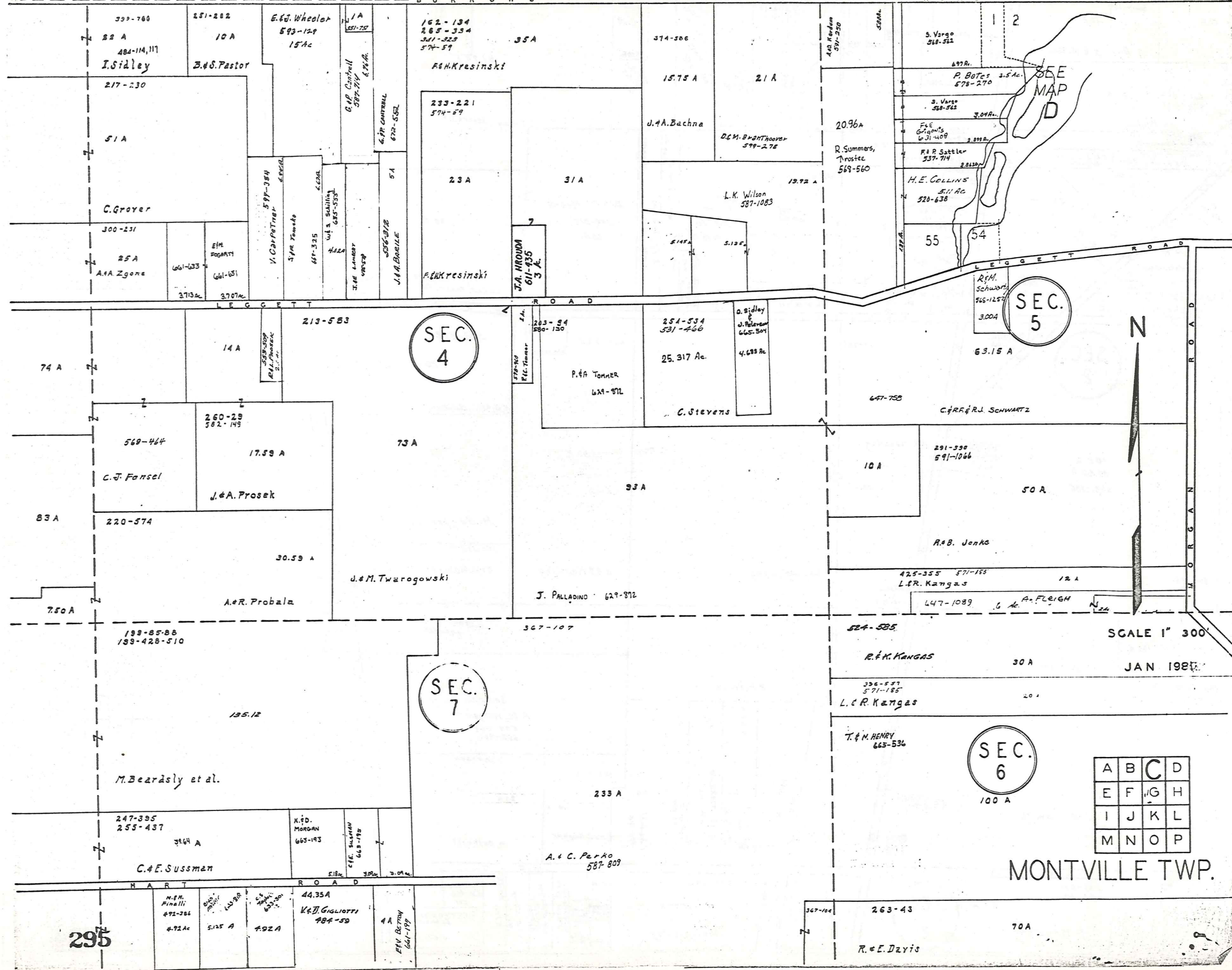
MONTVILLE TWP.

SCALE 1" = 300'
JAN. 1981

293

291-74
300-151
508-101
31 A
260-284
32 A
J. Matter
5 A
F. Anderson
C17-649
S.E. Dockery Sr.
44-9876
633-1173
45 A
F.B. L.L. LINDON, JR.
572 AC.
542-883
S.J. L.M.
NATICCHIA
27.50 AC
M. UPHAM
450 AC
418-883
D. Townsend
214 A
270-278
463-955
7.3 AC
L. HOPSTETTER
SEE MAP

THOMPSON TOWNSHIP



SEC. 4

SEC. 5

SEC. 7

SEC. 6

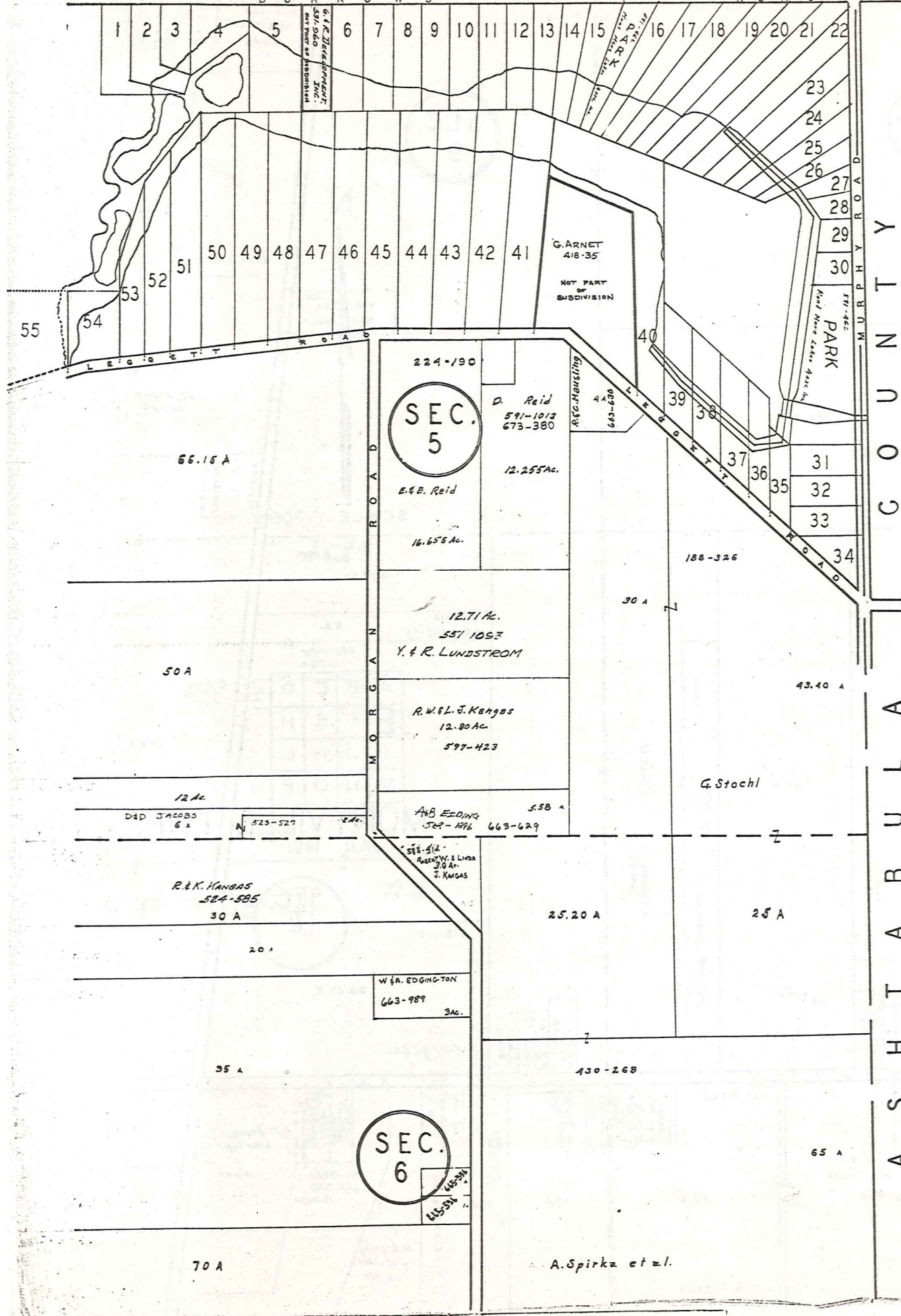
A	B	C	D
E	F	G	H
I	J	K	L
M	N	O	P

MONTVILLE TWP.

SCALE 1" = 300'
JAN 1987

295

T H O M P S O N T O W N S H I P



MONT-MERE COLONY
 SUBDIVISION ONG - Vol. 9 - Pg. 96

1	J. H. MURRAY	657-363
2	J. H. MURRAY	657-363
3	J. H. MURRAY	657-363
4	M. B. NUTTING	657-363
5	G. S. SUBACK	657-363
6		
7	J. H. MURRAY	657-363
8	J. H. MURRAY	657-363
9	J. H. MURRAY	657-363
10	J. H. MURRAY	657-363
11	S. C. LIPKA	617-340
12	C. E. LIPKA	523-001
13	L. L. SURPANO	631-227
14	M. J. VENTONIS	600-040
15	J. W. SURPANO	552-810
16	J. W. SURPANO	552-810
17	J. W. SURPANO	552-810
18	M. B. UMBEL	589-1059
19	I. S. SLEWIC	653-601
20	G. S. GRODLE	580-819
21	T. M. VASI	641-916
22	W. A. WRIGHT	647-315
23		
24	R. D. CONKLIN	515-312
25		
26	T. D. PENNINGER	
27	G. MORZECOWSKI	633-1033
28	A. E. ZUCALLO	653-1010
29	R. E. STONIS	607-1066
30	J. E. F. STEPHEN	576-297
31	D. KINGSLAND	676-611
32	A. J. M. M. ANDRIS	643-914
33	J. C. GONNICK	562-428
34	P. H. H. H. H.	578-800
35	E. H. PALMAS	647-369
36	E. H. PALMAS	647-369
37	K. & L. GRANDT	615-123
38	S. F. GONNICK	641-917
39	A. G. KONIKAS	633-413
40	Steve Repas	577-421
41		
42	D. E. BEAR	578-1201
43	R. M. KHOP	577-342
44	H. N. BROWN	577-426
45	D. TROSTER	604-378
46		
47	I. A. TEMPLE	653-308
48	C. D. M. BRIDE	580-416
49	P. R. DEER	577-1021
50	P. R. DEER	577-1021
51	D. D. DEER	577-1021
52	R. B. TEMPLE	557-1026
53	J. A. PETERSON	647-292
54	T. O. KANSTETZ	648-828
55	L. P. WIKES	681-1071



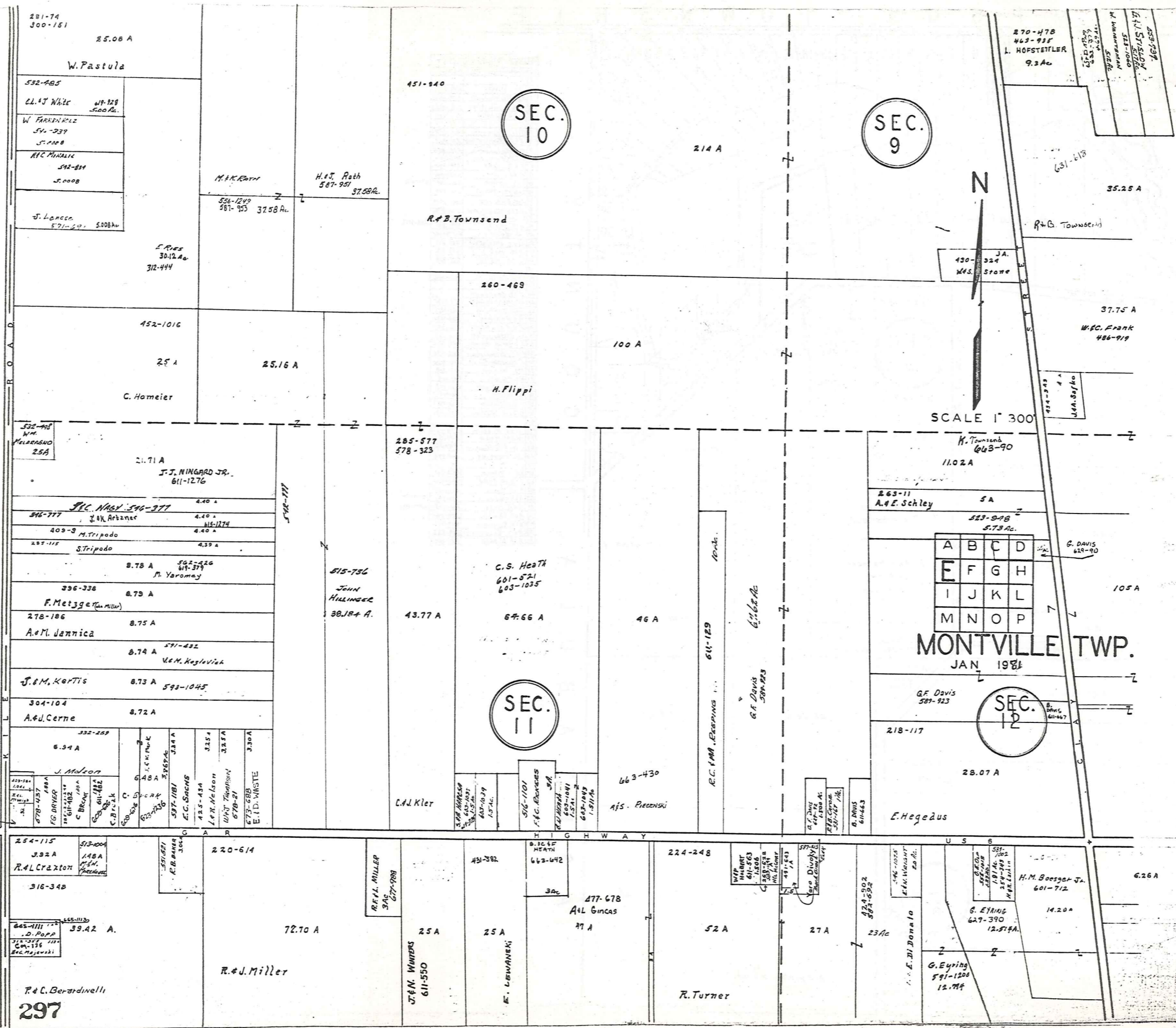
SCALE 1" = 300'
 JAN 1988

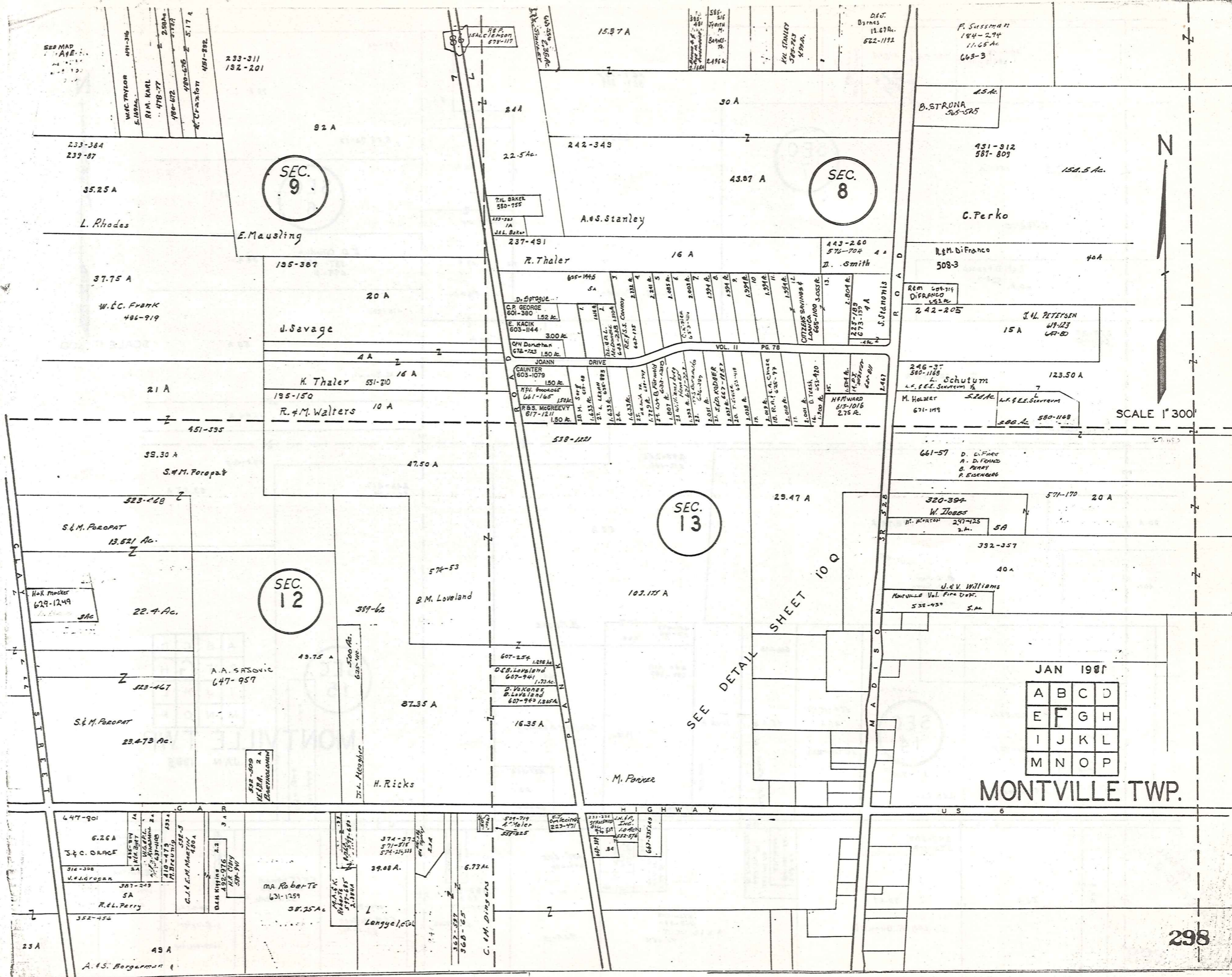
A	B	C	D
E	F	G	H
I	J	K	L
M	N	O	P

296

MONTVILLE TWP.

H A M B D E N T O W N S H I P





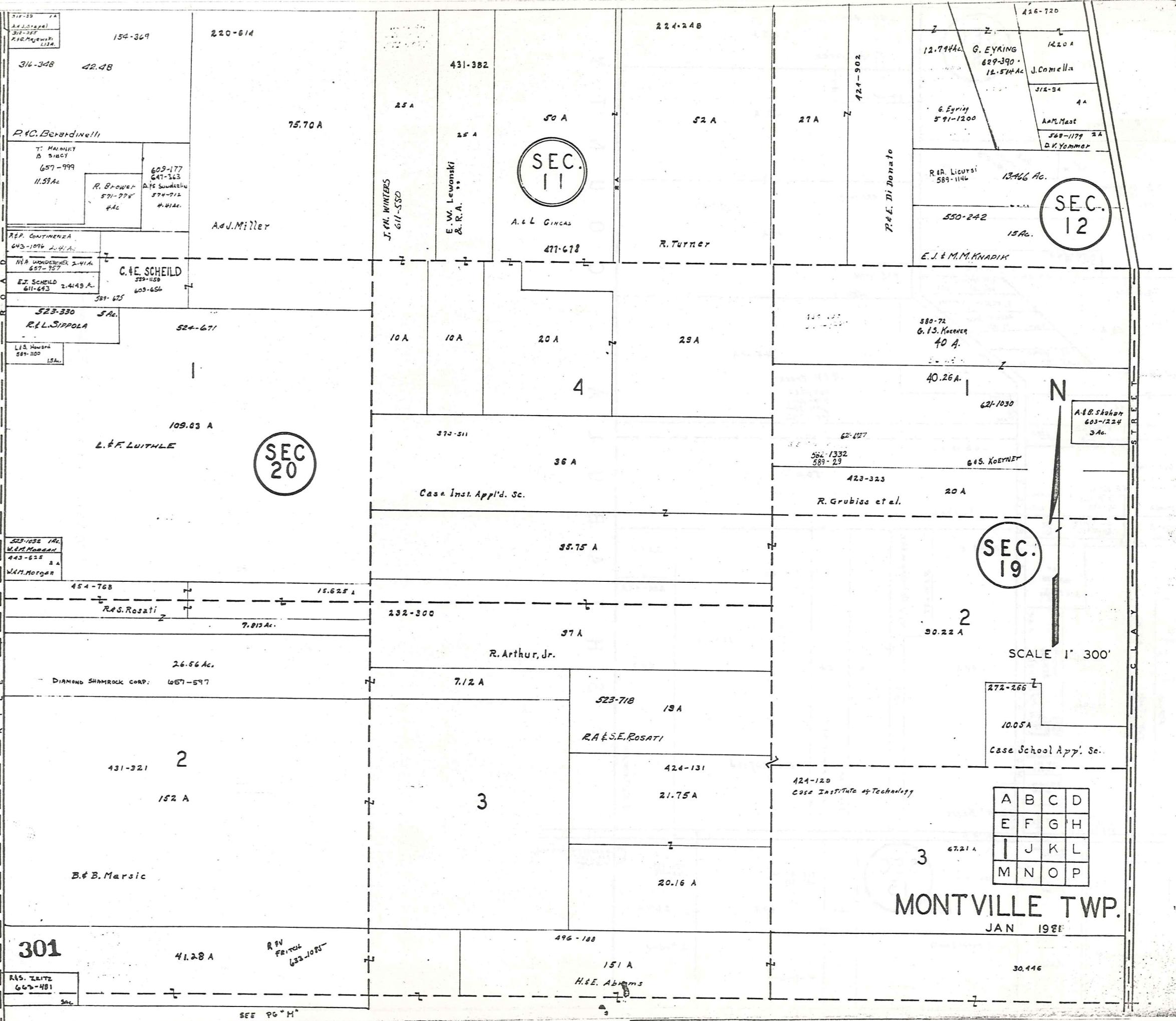
SCALE 1" = 300'

JAN 1981

A	B	C	D
E	F	G	H
I	J	K	L
M	N	O	P

MONTVILLE TWP.

H A M B D E N T O W N S H I P



SEC. 11

SEC. 12

SEC. 20

SEC. 19

A	B	C	D
E	F	G	H
I	J	K	L
M	N	O	P

MONTVILLE TWP.
JAN 1861

301

SEE PG "M"

SEE
DETAIL SHEET
10 Q

247-507

SEC.
14

SEC.
15

50 A

70.57 A

70.45 A

35

418-995

40 A

453-402,404

66.38 Ac.
454-307
F.G.M. McKeon

E.F.R. WEBER
524-266
67.358 Ac.

S. Ziegler
21.79 Ac.
459-402,404

S. Ziegler
26.24 Ac.
425-84

673-1306
403-330
A.R. & D. LICHT

A. W. Niska

A. L. - H. K. Ohralik

R.L. WILSON
47-322
47-322

10.86 A

245-8
571-1368

50.23 A

6

10 A

5

110.50 A

6

N

37.19 Ac.

459-402,404

T. & E. Stone

37.914 A

523-725

20 A

26 A

EUCLID RIFLE
AND
HUNTING CLUB
647-405

295-397 Euclid Rifle & Hunting Club

37.19

10 A

2

4

260-433
S. Yambor

2

30.50 A

9.64 A

55.50 A

46.50 A

52.69 A

SCALE 1 300

SEC.
17

SEC.
16

R. E. M. GAREY
611-881
1.09 A.
75 A

R. E. M. GAREY
611-879

H. M. BOENGER

J. M. KROUSKY 474-308

J. Yambor Jr.
571-34
3.20 A.
G. YAMBOR
611-498 3,000 A.
S. Yambor
588-657
3.00 A.
S. McDonald III
305-577-24
3 Ac. 603-34

WHITNEY ROAD

ROAD

233-543

3

M. A. GYETKO
19.90 Ac.
672-1032

C. E. GYETKO JR.
609-537 20.00 A

E. Gyetko
657-510

C. E. BEZLEB
683-416

320-385

14.74 A

H. FALTON, JR.

R. E. M. GAREY
SUBJECT
807-1017
609-46

W. T. JACKSON
7.44 Ac.
609-223

35.26 A

22-6-89
255-69
558-1064

667-74, 797

J. B. HAYES

A	B	C	D
E	F	G	H
I	J	K	L
M	N	O	P

MONTVILLE TWP.
JAN 1987

303

1.25 A

SUN ROAD

25 A

453-333
42.50 A

G. & C. Brown

F. M. NIXON 245-351
17 A.

F. C. NIXON
587-2205
13 A.

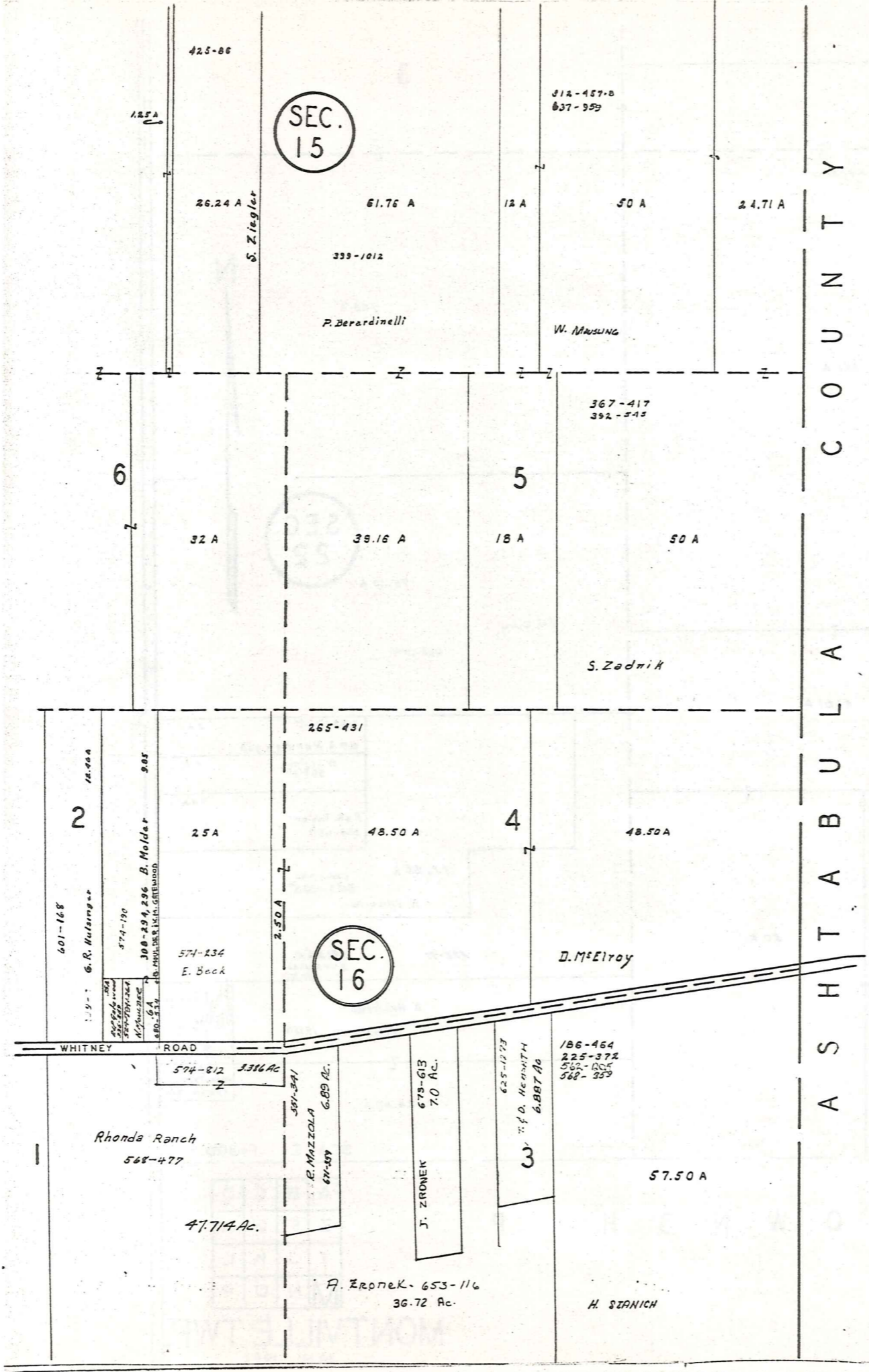
601-176
E. Gyetko

82 Ac.

E. Gyetko

93242

93242



A S H T A B U L A C O U N T Y

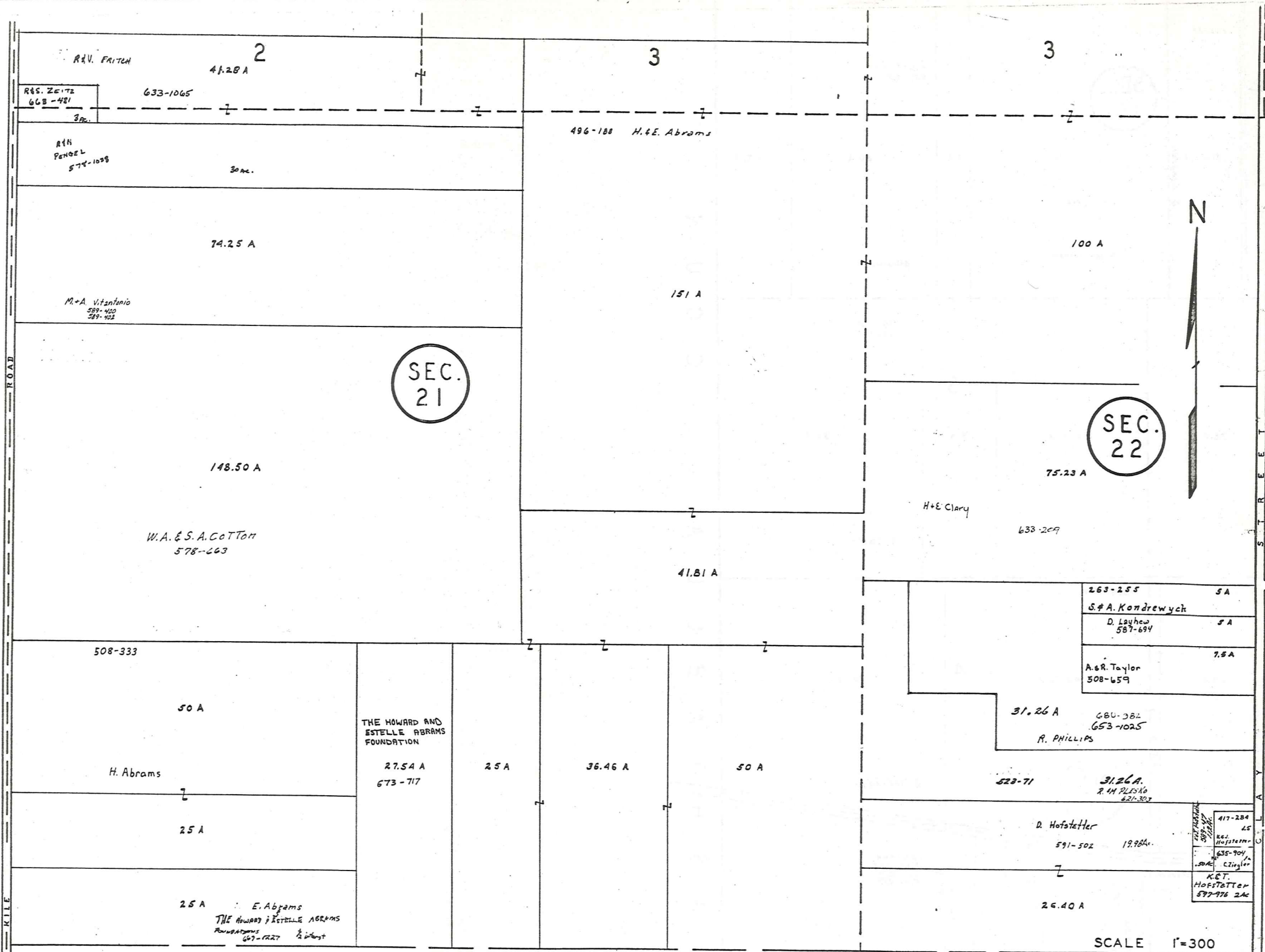


SCALE 1"=300'
JAN 1981

A	B	C	D
E	F	G	H
I	J	K	L
M	N	O	P

MONTVILLE TWP.
304

H A M B D E N T O W N S H I P



H U N T S B U R G T O W N S H I P

MONTVILLE TWP.
JAN 1983

286-194

SEC. 19

250-370

88.22 A

452-881

SEC. 18

76.52 A

R10 Chenoweth

617-307
L. J. Rabatin
254-331 2A
615-350
M. Rabatin

M. Rabatin

M. E. Rogers

Z. J. GIOVINALE

785A

785A

1.25 A

M. SAUGE 234A

R. D. Armbruster 607-113 234A

591-246 B.A. HEGELE 234A

565-1127 8.98 A

G.R. BEITZ

268-418 9 A

H. M. Bodner

115-142 3.515 A

D.M. Roby

3.515 A

607-199

Frank Mojewski

667-59 235-55

R. J. Sillwell

254-431 5A

S. Grogan

D. M. Craig 5A

591-66

460-659 5A

M. Norsic

443-358 2.25 A

R. M. Conley

G. N. Walter 425-874 3.85A

M. J. JAFFE

512-344 6.55 A

M. J. A. JAFFE

551-668

39.37 A

J. H. Kleppel

571-445 20 A

W. P. Haney

571-443 25 A

W. D. Haney

512-344 6.55 A

M. J. A. JAFFE

512-344 6.55 A

M. J. A. JAFFE

512-344 6.55 A

M. J. A. JAFFE

512-344 6.55 A

M. J. A. JAFFE

512-344 6.55 A

M. J. A. JAFFE

512-344 6.55 A

M. J. A. JAFFE

512-344 6.55 A

M. J. A. JAFFE

512-344 6.55 A

M. J. A. JAFFE

512-344 6.55 A

M. J. A. JAFFE

512-344 6.55 A

M. J. A. JAFFE

512-344 6.55 A

M. J. A. JAFFE

512-344 6.55 A

M. J. A. JAFFE

512-344 6.55 A

M. J. A. JAFFE

512-344 6.55 A

M. J. A. JAFFE

512-344 6.55 A

M. J. A. JAFFE

512-344 6.55 A

M. J. A. JAFFE

512-344 6.55 A

M. J. A. JAFFE

512-344 6.55 A

M. J. A. JAFFE

512-344 6.55 A

M. J. A. JAFFE

512-344 6.55 A

M. J. A. JAFFE

512-344 6.55 A

M. J. A. JAFFE

512-344 6.55 A

M. J. A. JAFFE

512-344 6.55 A

M. J. A. JAFFE

512-344 6.55 A

M. J. A. JAFFE

512-344 6.55 A

M. J. A. JAFFE

512-344 6.55 A

M. J. A. JAFFE

512-344 6.55 A

M. J. A. JAFFE

512-344 6.55 A

SEC. 22

4

113 A

93 A

430-172

V. T. Reed

M. Reed

3

D. Kosies 687-1154 3A

423-1049

480-888

515-742

562-300

D. Kosies

5355 A.

562-800

515-742

562-300

D. Kosies

7.20 A.

P. G. Adams

269-934

38.91 A

678-671

5.03

W. E. LIGHT

W. J. RHODES

7673-740

SEC. 22

4

113 A

93 A

430-172

V. T. Reed

M. Reed

3

D. Kosies 687-1154 3A

423-1049

480-888

515-742

562-300

D. Kosies

5355 A.

562-800

515-742

562-300

D. Kosies

7.20 A.

P. G. Adams

269-934

38.91 A

678-671

5.03

W. E. LIGHT

W. J. RHODES

7673-740

SEC. 22

4

113 A

93 A

430-172

V. T. Reed

M. Reed

3

D. Kosies 687-1154 3A

423-1049

480-888

515-742

562-300

D. Kosies

5355 A.

562-800

515-742

562-300

D. Kosies

7.20 A.

P. G. Adams

269-934

38.91 A

678-671

5.03

W. E. LIGHT

W. J. RHODES

7673-740

SEC. 22

4

113 A

93 A

430-172

V. T. Reed

M. Reed

3

D. Kosies 687-1154 3A

423-1049

480-888

515-742

562-300

D. Kosies

5355 A.

562-800

515-742

562-300

D. Kosies

7.20 A.

P. G. Adams

269-934

38.91 A

678-671

5.03

W. E. LIGHT

W. J. RHODES

7673-740

SEC. 22

4

113 A

93 A

430-172

V. T. Reed

M. Reed

3

D. Kosies 687-1154 3A

423-1049

480-888

515-742

562-300

D. Kosies

5355 A.

562-800

515-742

562-300

D. Kosies

7.20 A.

P. G. Adams

269-934

38.91 A

678-671

5.03

W. E. LIGHT

W. J. RHODES

7673-740

SEC. 22

4

113 A

93 A

430-172

V. T. Reed

M. Reed

3

D. Kosies 687-1154 3A

423-1049

480-888

515-742

562-300

D. Kosies

5355 A.

562-800

515-742

562-300

D. Kosies

7.20 A.

P. G. Adams

269-934

38.91 A

678-671

5.03

W. E. LIGHT

W. J. RHODES

7673-740

SEC. 22

4

113 A

93 A

430-172

V. T. Reed

M. Reed

3

D. Kosies 687-1154 3A

423-1049

480-888

515-742

562-300

D. Kosies

5355 A.

562-800

515-742

562-300

D. Kosies

7.20 A.

P. G. Adams

269-934

38.91 A

678-671

5.03

W. E. LIGHT

W. J. RHODES

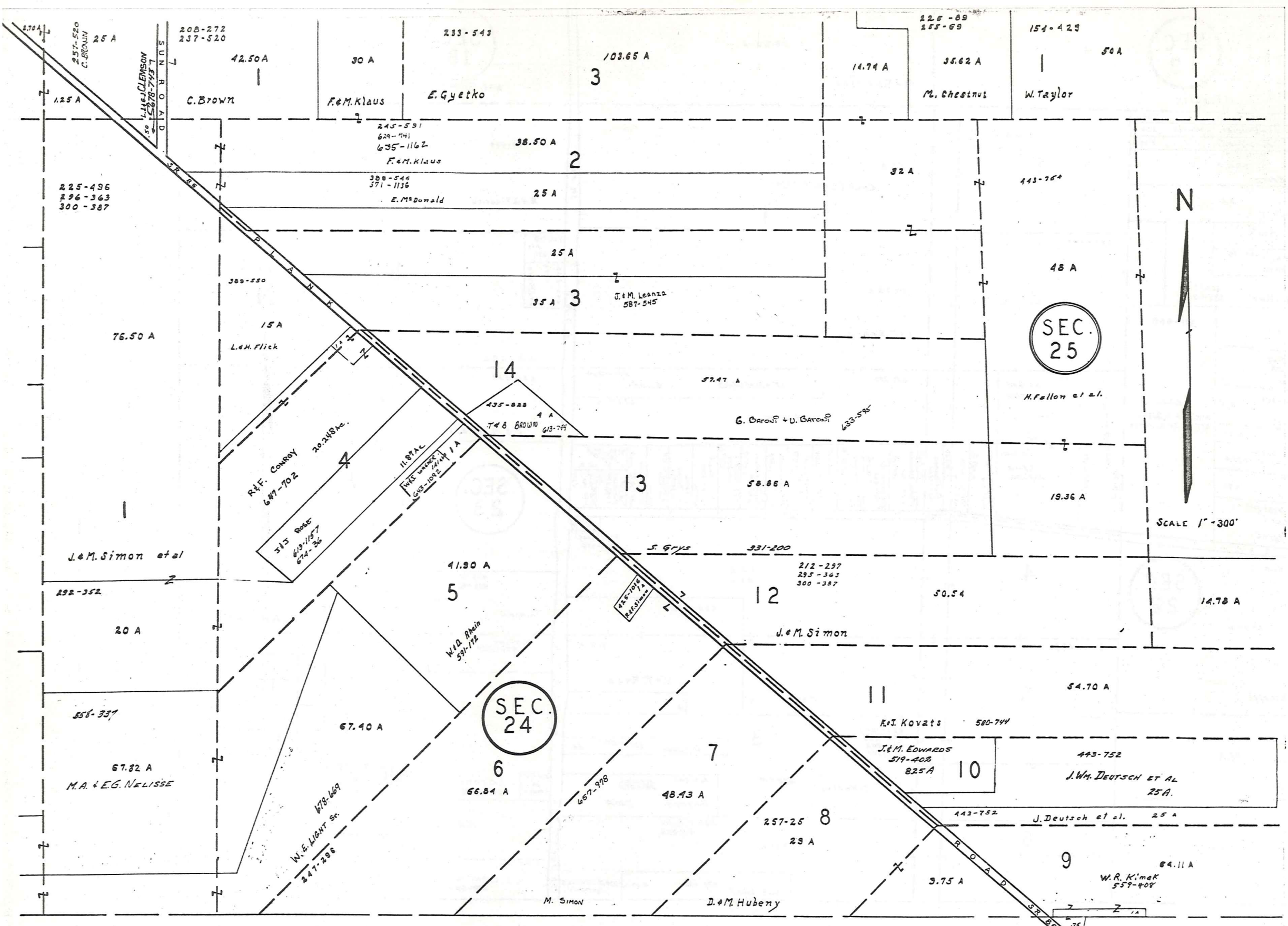
7673-740

SEC. 22

4

113 A

93 A



H U N T S B U R G T O W N S H I P

SCALE 1" = 300'
JAN 1981

A	B	C	D
E	F	G	H
I	J	K	L
M	N	O	P

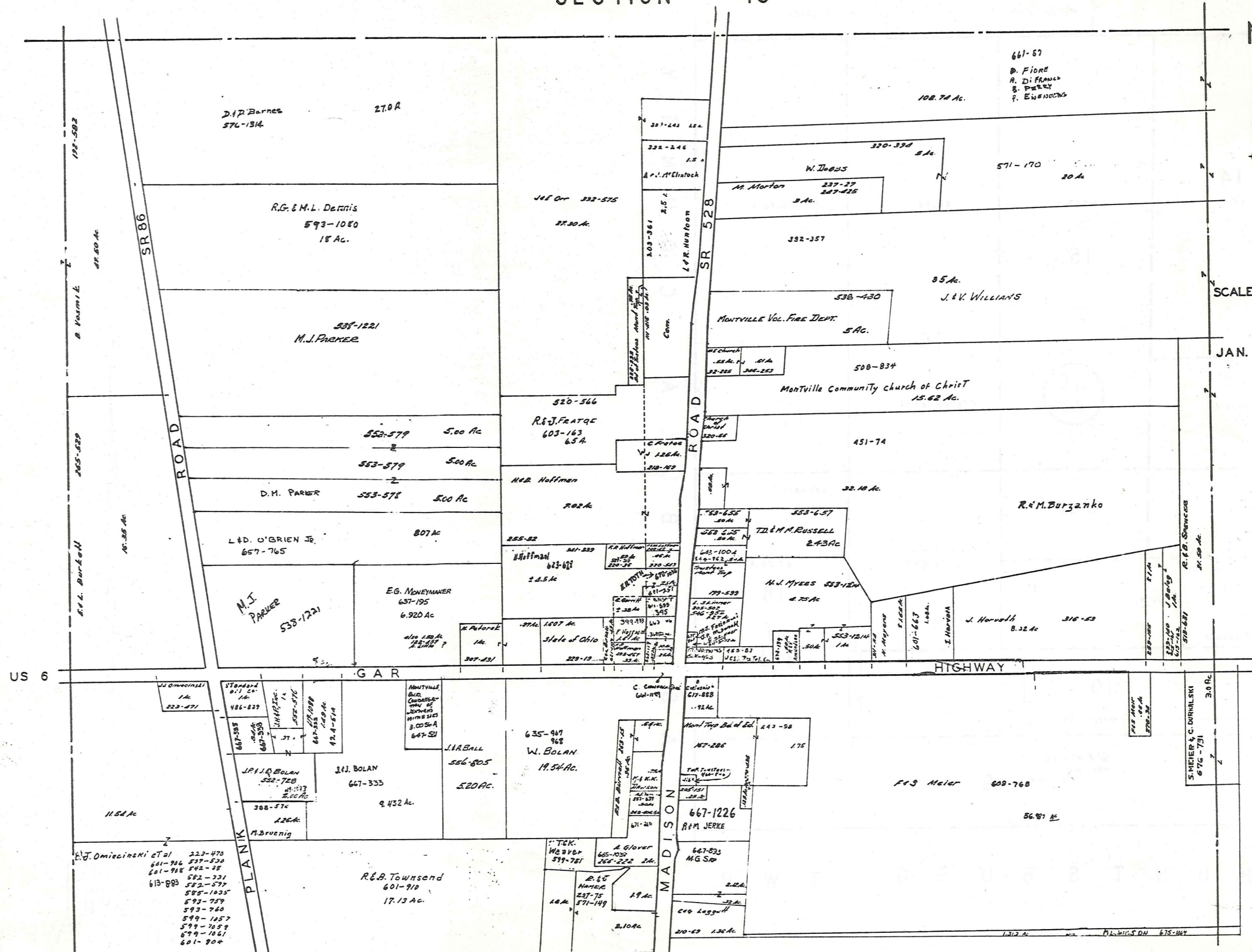
MONTVILLE TWP.

MONTVILLE TWP
SECTION 13



SCALE 1" = 200'

JAN. 1, 1981



309

10-Q

Explanation and Use Sheet for Geauga County, Ohio

SAMPLE (PARTIAL) COUNTY INDEX MAP



Township Boundary

Township Name

Village Boundary

Village Name

Tract Lot Number

Street Name

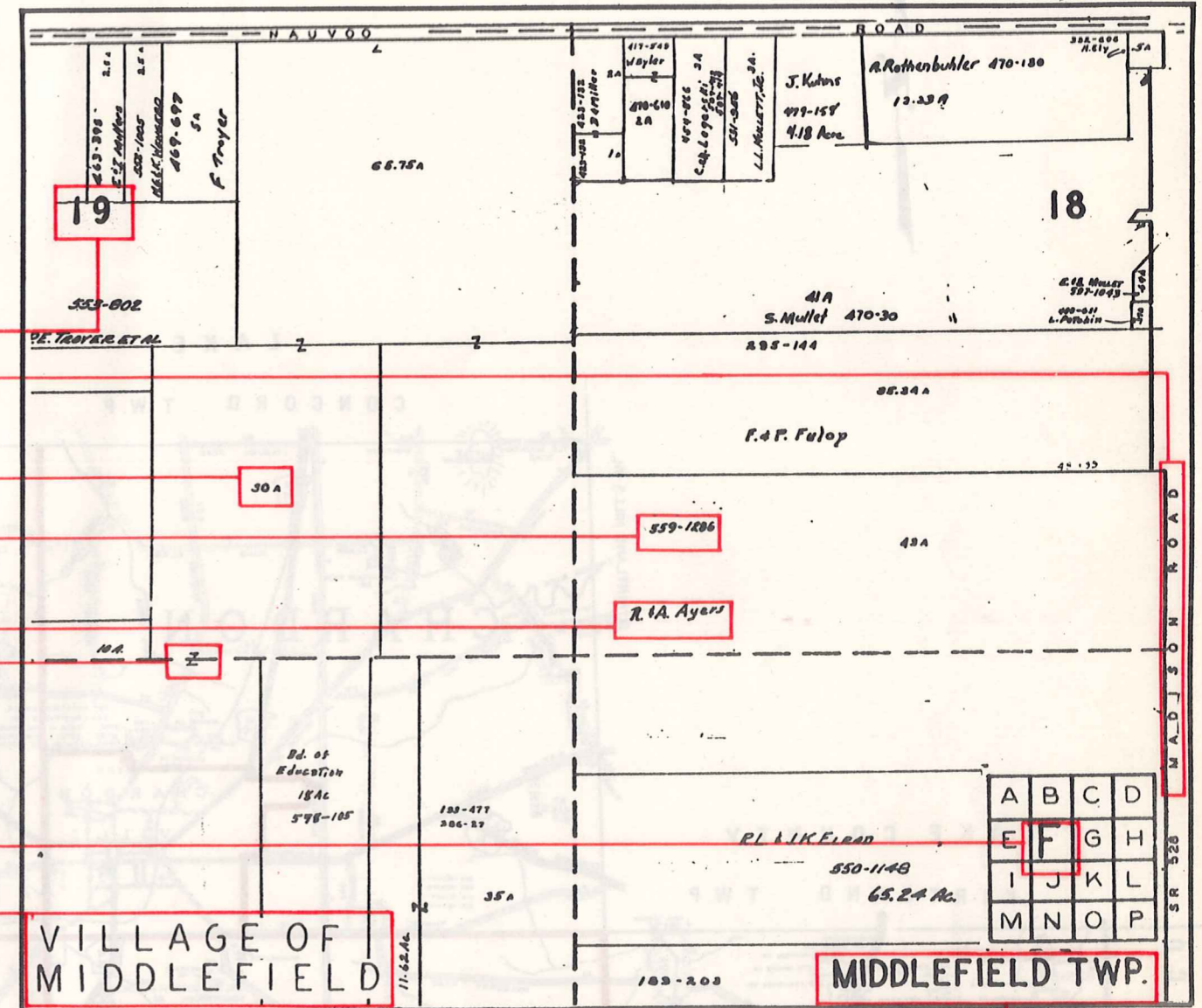
Acreage

Deed Book & Page

Owners Name

Denotes Continous Ownership

SAMPLE (PARTIAL) MAP PAGE



Map Page Number

Village Name

Village Boundary

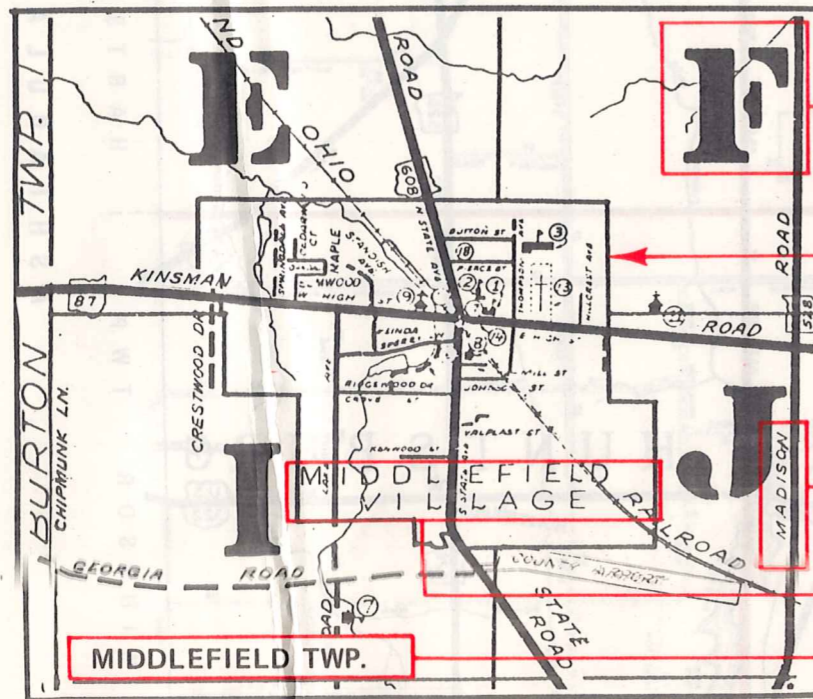
Township Name

Street Name

Village Name

Township Name

SAMPLE (PARTIAL) MUNICIPALITY INDEX MAP



This book is the property of REAL ESTATE DATA, INC. and is distributed by REDI under a leasing arrangement requiring return to REDI upon termination of the lease. REDI reserves the right to reclaim this book if found in the possession of any firm or person where possession was obtained through any unauthorized source.

USE OF THE MAP VOLUME

1. LOCATE THE GENERAL AREA OF INTEREST ON THE COUNTY INDEX MAP, ATLAS PAGE 'B', AND NOTE THE MUNICIPALITY NAME (TOWNSHIP OR VILLAGE).
2. REFER TO THE TABLE OF CONTENTS, ATLAS PAGE 'C', AND NOTE THE BEGINNING ATLAS PAGE NUMBER FOR THE MUNICIPALITY OF INTEREST.
3. TURN TO THE PAGE INDICATED. ON THIS PAGE WILL APPEAR AN INDEX MAP FOR THAT MUNICIPALITY.
4. LOCATE THE GENERAL AREA OF INTEREST AND NOTE THE MAP PAGE NUMBER. THIS MAY BE EITHER A LETTER OR A NUMBER.
5. MAP PAGES ARE IN ALPHABETICAL (OR NUMERICAL) SEQUENCE FOLLOWING THE MUNICIPALITY INDEX MAP. FOLLOW SEQUENCE TO THE MAP PAGE INDICATED.
6. LOCATE SPECIFIC PARCEL OF INTEREST AND NOTE THE DESIRED INFORMATION.

NOTE: ON SOME MAPS YOU MAY BE REFERRED TO A DETAIL SHEET SHOWING AN ENLARGEMENT OF THE AREA. THESE MAPS ARE FOUND AT THE END OF THE REGULAR MAP PAGES IN EACH MUNICIPALITY IN EITHER ALPHABETICAL OR NUMERICAL SEQUENCE.

NOTE: CHARDON VILLAGE HAS TITLE SHEETS. TO LOCATE OWNERS NAME, NOTE THE PARCEL NUMBER, REFER TO THE TITLE PAGE FOLLOWING THE MAP OF INTEREST, FOLLOW NUMERICAL SEQUENCE TO THE PARCEL NUMBER OF INTEREST AND NOTE THE DESIRED INFORMATION. IN ALL OTHER MUNICIPALITIES THE OWNERS NAME APPEARS ON THE MAP PAGE.